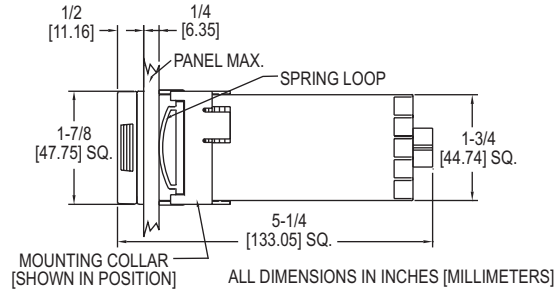


LIMIT CONTROL

FM Approved, Large Dual Display, Universal Input



Panel cutout 1.77" + 0.02" [45 mm + 0.6 mm] square

Panel Meters/Indicators /
Temperature Switches, Limit

The **Series 16L Limit Control** offers FM approved limit control with universal input, single set point or dual set point control.

FEATURES/BENEFITS

- Remote or integral reset button
- Peak and valley temperature indication
- Open sensor protection

APPLICATIONS

- Gas fired heater limit control

MODEL CHART		
Model	Output A	Output B
16L2030	N.O. relay	None
16L2034	N.O. relay	N.C. relay

Note: For other configurations, see website

ACCESSORIES	
Model	Description
A-600	R/C snubber

SPECIFICATIONS	
Selectable Inputs:	10 thermocouple, 4 RTD, DC voltage, or DC current selectable.
Display:	Two 4 digit, 7 segment 0.3" (7.62 mm) high LEDs.
Accuracy:	±0.25% of span, ±1 least significant digit.
Power Requirements:	100-240 VAC, nominal, +10 -15%, 50 to 400 Hz. single phase; 132-240 VDC, nominal, +10 -20%.
Power Consumption:	5 VA maximum.
Temperature Limits:	14 to 131°F (-10 to 55°C).
Memory Backup:	Nonvolatile memory. No batteries required.
Output:	Relay: SPST, 3 A @ 240 VAC resistive; 1.5 A @ 240 VAC inductive.
Weight:	8 oz (227 g).
Front Panel Rating:	NEMA 4X (IP66).
Agency Approvals:	FM, cULus.

OPTIONS	
To order add suffix:	Description
-934	Process signal output, isolated 0-20 mA DC
-936	Process signal output, isolated 0-10 VDC
-992	RS-RS-485 serial communications
-993	RS-RS-232 serial communications