



SERIES DTFW & DTFA

# VARIABLE-AREA FLOWMETERS

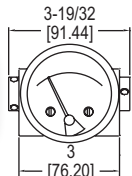
In-Line Mounting, Gas, Liquids and Oils



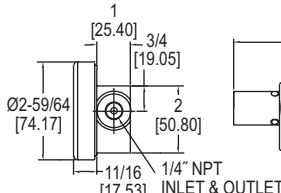
DTFW



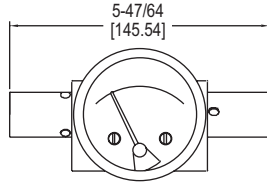
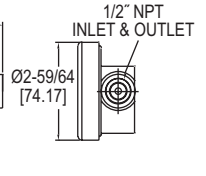
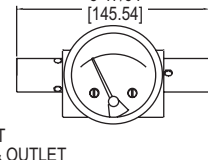
DTFA



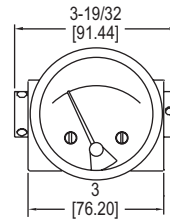
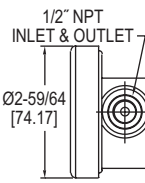
1/4" NPT connection



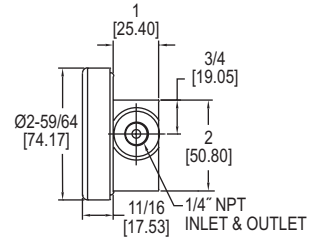
1/2" NPT connection



1/2" NPT process connection



1/4" NPT connection



The **Series DTFW Variable-Area Flowmeters** for Liquids and Oils measure water or oil flow rates with  $\pm 2\%$  of full-scale accuracy at a competitive price. Available in 1/4", 1/2" and 1" connections for a wide variety of applications and comes calibrated for horizontal in line mounting.

The **Series DTFA Variable-Area Flowmeters** for Gases measures gas flow rates with  $\pm 5\%$  of full-scale accuracy at an affordable price. Available in either 1/4" or 1/2" NPT connections and comes pre-calibrated for horizontal in-line mounting.

**FEATURES/BENEFITS**

- Durable metal construction ensures great reliability and the strength to withstand system pressures of up to 3000 psig (200 bar).
- Shatter proof construction, unlike glass tube variable area flowmeters, yields long operation life
- Perform precisely in high temperature, high vibration, shock-prone environments

**APPLICATIONS**

- Monitoring pressure drop across filters or strainers
- Flow scale based on differential pressure
- Liquid level given pressure differential between bottom and top of tank
- Hydraulic equipment
- Oil and gas equipment
- Heat exchangers
- Backflow prevention

**SPECIFICATIONS**

**Service:** DTFW: Compatible liquids; DTFA: Compatible gases.  
**Wetted Materials:** Body: 316 SS, brass or aluminum; Spring: 302 SS or PTFE-coated; Range spring: 302 SS; Magnet: PTFE-coated; Metering cone: Acetal or PTFE; Seals: Buna.  
**Temperature Limits:** -40 to 200°F (-40 to 93°C).  
**Pressure Limit:** DTFW-3S: 1500 psig (100 bar); All other DTFW models: 3000 psig (200 bar); DTFA: 3000 psig (200 bar).  
**Accuracy:** Liquid/oil calibration:  $\pm 2\%$  FS; Air calibration:  $\pm 5\%$  FS.  
**Repeatability:**  $\pm 1\%$  FS.  
**Size:** Diameter dial face 2.5" (63.5 mm).  
**Process Connection:** See model chart.  
**Weight:** DTFW-1B and 1S: 3 lb (1.36 kg); DTFW-2B and 2S: 5 lb (2.27 kg); DTFW-3S: 10 lb (4.54 kg); DTFA-1A: 3 lb (1.36 kg); DTFA-2A: 5 lb (2.27 kg).

**MODEL CHART**

Model	Range, SCFM	Body	Connection
DTFA-1A-10A	1.5 to 10	Aluminum	1/4" NPT
DTFA-1A-15A	2.0 to 15	Aluminum	1/4" NPT
DTFA-1A-20A	3.0 to 20	Aluminum	1/4" NPT
DTFA-1A-25A	3.0 to 25	Aluminum	1/4" NPT
DTFA-2A-30A	3.0 to 30	Aluminum	1/2" NPT
DTFA-2A-40A	4.0 to 40	Aluminum	1/2" NPT
DTFA-2A-50A	4.0 to 50	Aluminum	1/2" NPT
DTFA-2A-75A	5.0 to 75	Aluminum	1/2" NPT
DTFA-2A-100A	10.0 to 100	Aluminum	1/2" NPT

**MODEL CHART**

Model	Range GPM Water	Connection NPT	Body	Metering Cone	Model	Range GPM Water	Connection NPT	Body	Metering Cone
DTFW-1B-1W	0 to 1	1/4"	Brass	Acetal	DTFW-2B-8W	0 to 8	1/2"	Brass	Acetal
DTFW-1B-2W	0 to 2	1/4"	Brass	Acetal	DTFW-2B-10W	0 to 10	1/2"	Brass	Acetal
DTFW-1B-3W	0 to 3	1/4"	Brass	Acetal	DTFW-2S-1W	0 to 1	1/2"	SS	Acetal
DTFW-1B-4W	0 to 4	1/4"	Brass	Acetal	DTFW-2S-2W	0 to 2	1/2"	SS	Acetal
DTFW-1B-5W	0 to 5	1/4"	Brass	Acetal	DTFW-2S-3W	0 to 3	1/2"	SS	Acetal
DTFW-1S-1W	0 to 1	1/4"	SS	Acetal	DTFW-2S-4W	0 to 4	1/2"	SS	Acetal
DTFW-1S-2W	0 to 2	1/4"	SS	Acetal	DTFW-2S-5W	0 to 5	1/2"	SS	Acetal
DTFW-1S-3W	0 to 3	1/4"	SS	Acetal	DTFW-2S-8W	0 to 8	1/2"	SS	Acetal
DTFW-1S-4W	0 to 4	1/4"	SS	Acetal	DTFW-2S-10W	0 to 10	1/2"	SS	Acetal
DTFW-1S-5W	0 to 5	1/4"	SS	Acetal	DTFW-3S-10W	0 to 10	1"	SS	PTFE
DTFW-2B-1W	0 to 1	1/2"	Brass	Acetal	DTFW-3S-15W	0 to 15	1"	SS	PTFE
DTFW-2B-2W	0 to 2	1/2"	Brass	Acetal	DTFW-3S-20W	0 to 20	1"	SS	PTFE
DTFW-2B-3W	0 to 3	1/2"	Brass	Acetal	DTFW-3S-25W	0 to 25	1"	SS	PTFE
DTFW-2B-4W	0 to 4	1/2"	Brass	Acetal	DTFW-3S-30W	0 to 30	1"	SS	PTFE
DTFW-2B-5W	0 to 5	1/2"	Brass	Acetal					

Note: Not available in 1/4" or 1/2" SS.