



# Series SAH SMART Air Hood® Balancing Instrument - Low Flow Plugs

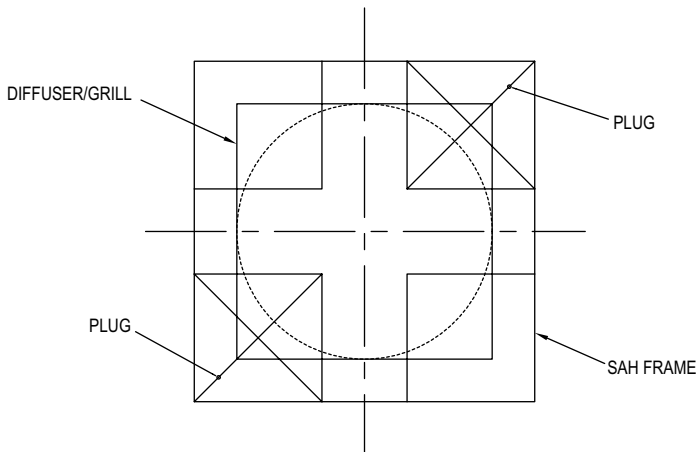
## Specifications - Installation and Operating Instructions



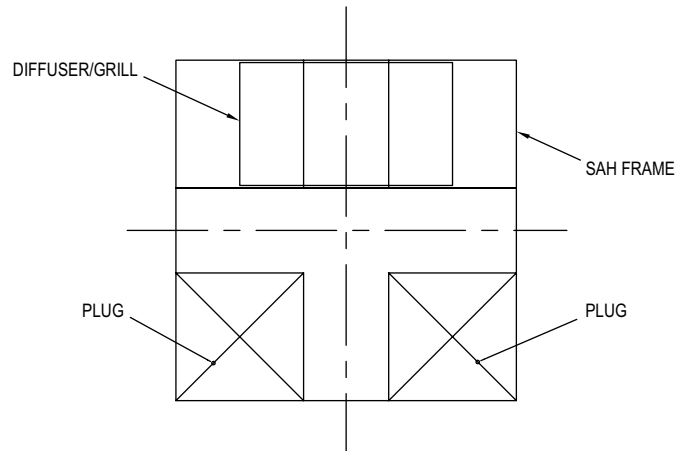
The **Series SAH SMART Air Hood® Balancing Instrument Low Flow Plugs** are for use in low flow applications with air flow from 40 to 125 CFM.

**NOTICE** The relative position of the diffuser/grill is solely dependent on the dimensions of the diffuser/grill.

**Diffuser/grill smaller than 24" x 24" and larger than 16" x 16"**  
Position the diffuser/grill over the center of the SAH frame as precise as you can (error can be caused by misalignment).



**Diffuser/grill 16" x 16" or smaller**  
Position the diffuser/grill in the center of one edge of the SAH frame and plug the two ports on the opposite side with the low flow plugs.



**MAINTENANCE/REPAIR**  
Low Flow Plugs require no routine maintenance. The Low Flow Plugs are not field serviceable and it is not possible to repair them in the field. Field repair should not be attempted and may void warranty.

**WARRANTY/RETURN**  
Refer to "Terms and Conditions of Sale" in our catalog and on our website. Contact customer service to receive a Return Materials Authorization (RMA) number before shipping the product back for repair. Be sure to include a brief description of the problem plus any additional application notes.